



CLEVER BOARD 3

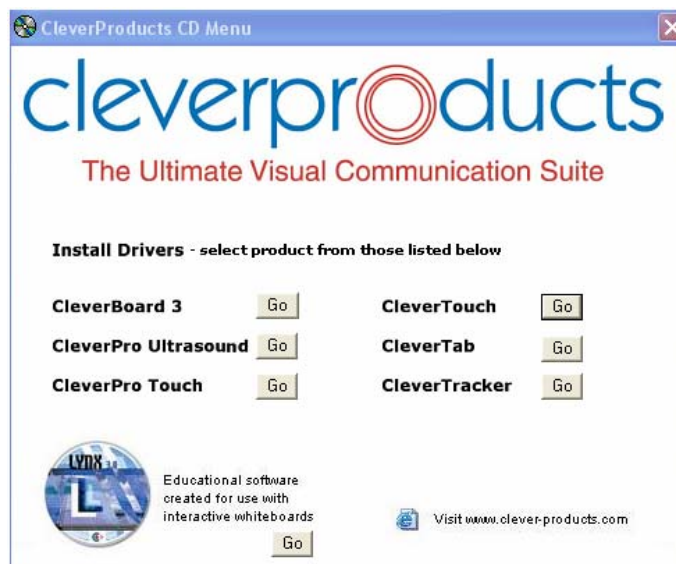
Getting Started:

Minimum equipment required to enable the system to work:

- **Cleverboard 3**
- **Cleverproducts CD**
- **Interactive Pen with battery**
- **USB Cable**
- **Computer (Laptop or desktop)**
- **Projector**
- **VGA Cable**

Loading Cleverboard 3 Drivers and Lynx Software:

- **Place the Cleverproducts CD in the CD tray in your computer, do not have the Cleverboard connected to the computer at this time.**
- **A box will appear as per below:**





- **Select Cleverboard 3 driver and click on “Go”. The driver installation will now take place but will not yet be complete.**
- **Once the (part) driver installation has completed attach the Cleverboard 3 to the computer with the USB cable.**
- **The computer will recognize that a new USB device has been plugged in and prompt you to complete the driver installation from the disk that is already in your CD tray.**
- **Follow your on screen instructions and finish the driver installation.**
- **Now install the Lynx software (from the same disk) and when prompted to do so add the “Lynx Serial Number” and the “Wordwall License Key” numbers which you will find on the back of the CD case.**
- **Once driver and Lynx software has been successfully loaded re-start your computer to ensure that all changes have taken place.**

Essential Connections:

- **Ensure Cleverboard 3 is mounted on the wall or on a floor stand.**
- **Connect computer to Cleverboard 3 with the USB cable provided.**
- **Connect computer to projector with VGA cable.**
- **Ensure all connections are made and then turn on computer and projector.**
- **Adjust projected image size to fit your board and focus the image.**

Beginning an Interactive session:

Ensure that all connections have been made as per the section above.

Ensure that the “Left Hand Door” is in the open position on the Cleverboard 3.

Ensure that the Interactive pen has a fresh battery in it and makes a “buzzing” sound when the tip is depressed and the unit held closely to the ear,



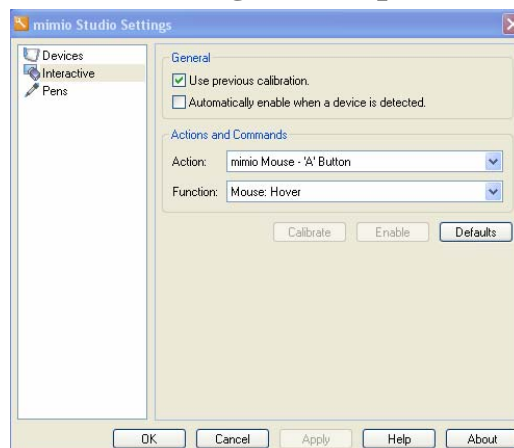
Calibration

- At the computer, look along the taskbar at the bottom of the screen. From the taskbar on the bottom right hand side of the screen, locate the icon :



Hover cursor over the icon and perform a right mouse click, scroll cursor up to “Settings” and left click on the word “Settings”.

- From the next screen that appears make sure the word “Interactive” is selected (in the left hand pane) and left click on the word calibrate (in the right hand pane).



- The projected image on the Cleverboard 3 will change to a white background with a black cross in a red circle, take the interactive pen and press perpendicularly to the screen, chase the crosses around the board, on the 9th cross the screen will change, press “OK”
- The board is now calibrated and when the pen is touched to the screen in each corner the curser should follow and lie directly beneath the pen nib. If it does not, repeat the process above.
- You are now ready to use the board interactively with Lynx Software.



Troubleshooting :

- 1. There is no communication between the computer and the board :**
 - Ensure computer is connected to board via USB cable.**
 - Ensure Cleverboard 3 left hand door is open.**
 - Check batteries in pen by listening for buzzing sound.**